

# KING PLOW ARTS CENTER FOR LEASE

887 W. Marietta Street

Atlanta, GA 30318



ATLANTA LEASING  
& INVESTMENT

## ECONOMICS – For Lease

- Total Project Size:** 256,000 S12.5 Acres
- Suites Currently Available:**
- Suite 981-112** (2,051 SF) \$4,444/mo.
  - Suite X101** (1,384 SF) \$3,656 /mo. partially furnished, [3-D TOUR](#)
  - Suite M-103** (1,347 SF) \$2,470/mo. [3-D TOUR](#)
  - Suite T105** (2,679 SF) \$5,840.50/mo.
  - Suite T107** (4,866 SF) \$10,543/mo. [3-D TOUR](#), [VIDEO TOUR](#)
  - Suite T110** (1,384 SF) \$2,998/mo. [3-D TOUR](#)
- Rates include base year CAM, tax and insurance. Tenant pays utilities.*
- Parking Lot:** Each leased unit includes one reserved space plus additional unreserved spaces (shared with other tenants at KPAC) for staff at no additional cost.



887 W. MARIETTA STREET, SUITES FOR LEASE ATLANTA GA, 30318



ATLANTA LEASING  
& INVESTMENT

▶ 404.348.4448

▶ [AtlantaLeasing.com/KingPlow](http://AtlantaLeasing.com/KingPlow)

## PROPERTY DETAILS

- Historic building with great tenant mix and synergy amongst tenants
- Exposed brick with large windows and skylights
- Welcoming and comfortable atmosphere inside the space
- Looking outward towards Marietta St
- Fantastic area amenities including top-tier Atlanta restaurants and entertainment
- 220 total parking spaces in the development
- Employee parking cards available for the parking garage and surface lot

### Great Co-Tenants:

Ballroom Dance Club of Atlanta  
Entertainment Property Law  
Paul Mitchell School  
Radix Health  
Bold American Events



**887 W. MARIETTA STREET, SUITES FOR LEASE ATLANTA GA, 30318**

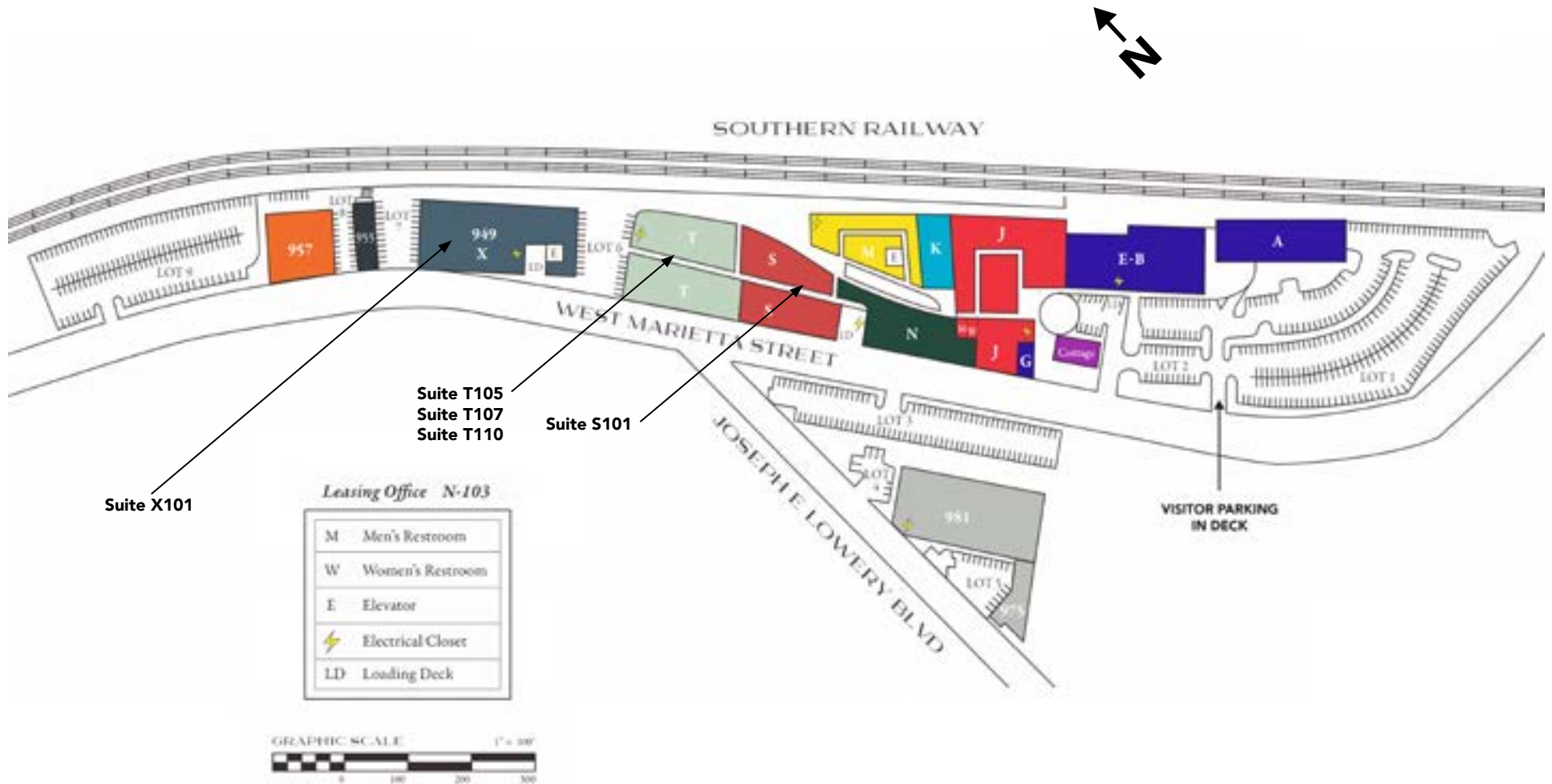


**ATLANTA LEASING  
& INVESTMENT**

▶ 404.348.4448

▶ [AtlantaLeasing.com/KingPlow](https://AtlantaLeasing.com/KingPlow)

# SITE PLAN



**887 W. MARIETTA STREET, SUITES FOR LEASE ATLANTA GA, 30318**

▶ 404.348.4448

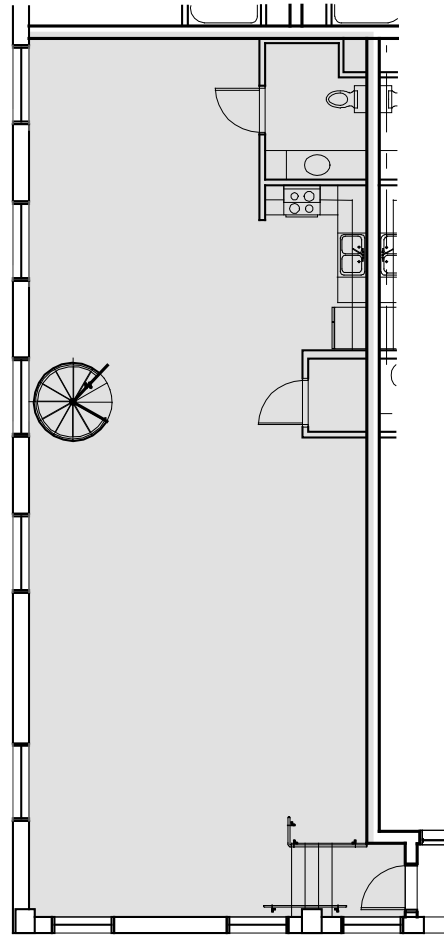
▶ [AtlantaLeasing.com/KingPlow](http://AtlantaLeasing.com/KingPlow)



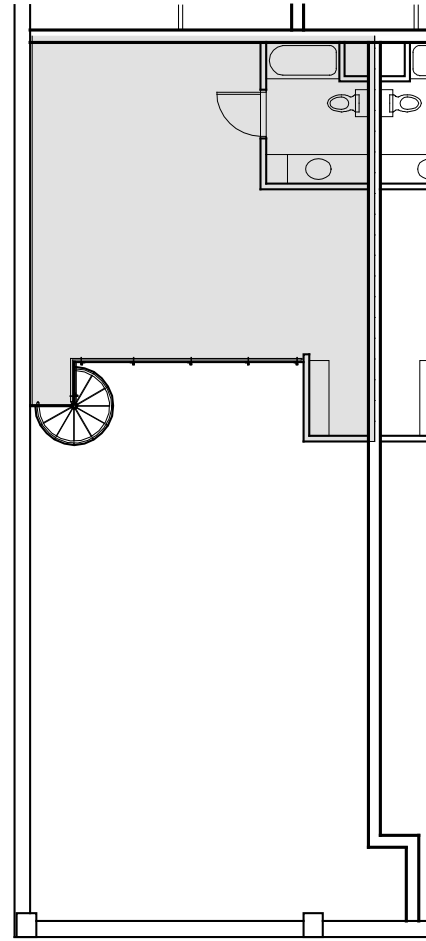
**ATLANTA LEASING  
& INVESTMENT**

## FLOOR PLAN - Suite 981-112

**TOTAL: 2,051 SF**



FIRST FLOOR



LOFT

**887 W. MARIETTA STREET, SUITES FOR LEASE    ATLANTA GA, 30318**

▶ 404.348.4448

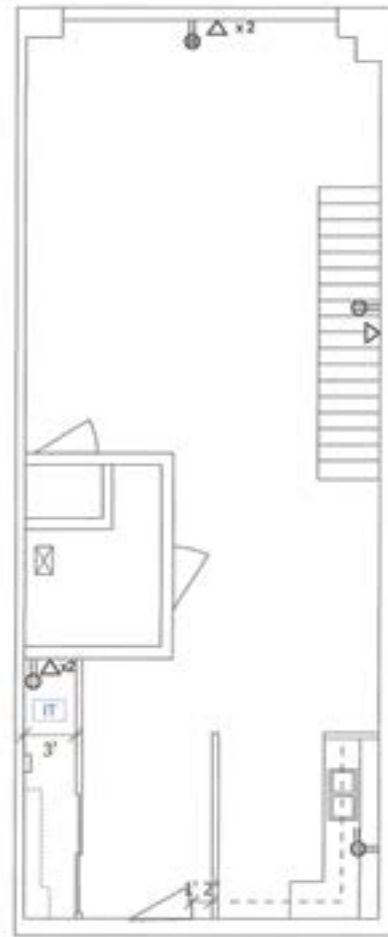
▶ [AtlantaLeasing.com/KingPlow](http://AtlantaLeasing.com/KingPlow)



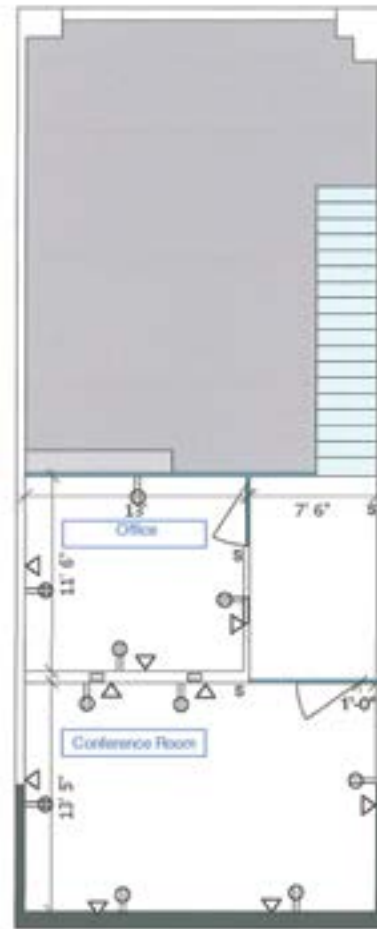
**ATLANTA LEASING  
& INVESTMENT**

## FLOOR PLAN - Suite X101

**TOTAL: 1,384 SF**



FIRST FLOOR



LOFT

887 W. MARIETTA STREET, SUITES FOR LEASE ATLANTA GA, 30318

▶ 404.348.4448

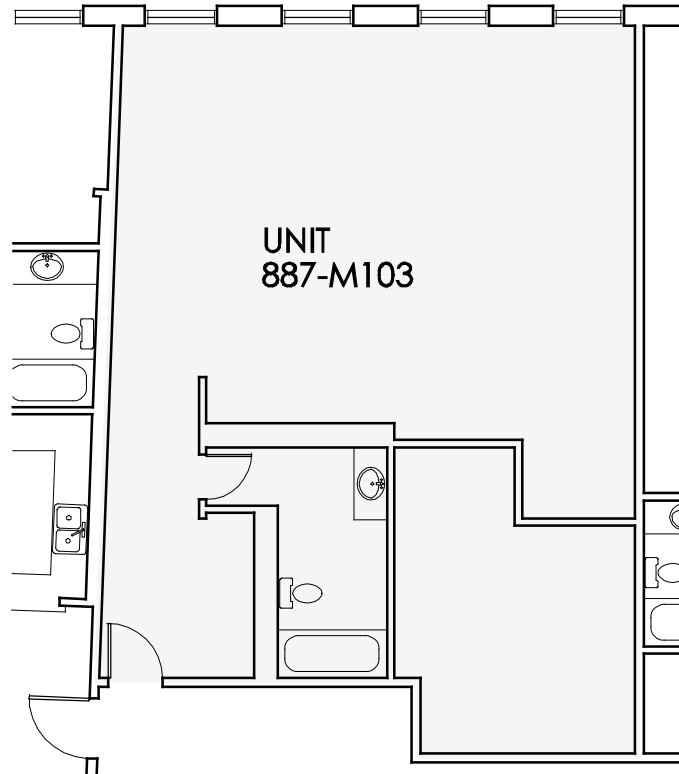
▶ [AtlantaLeasing.com/KingPlow](http://AtlantaLeasing.com/KingPlow)



**ATLANTA LEASING  
& INVESTMENT**

## FLOOR PLAN - Suite M103

**TOTAL: 1,140 SF**



**887 W. MARIETTA STREET, SUITES FOR LEASE    ATLANTA GA, 30318**

▶ 404.348.4448

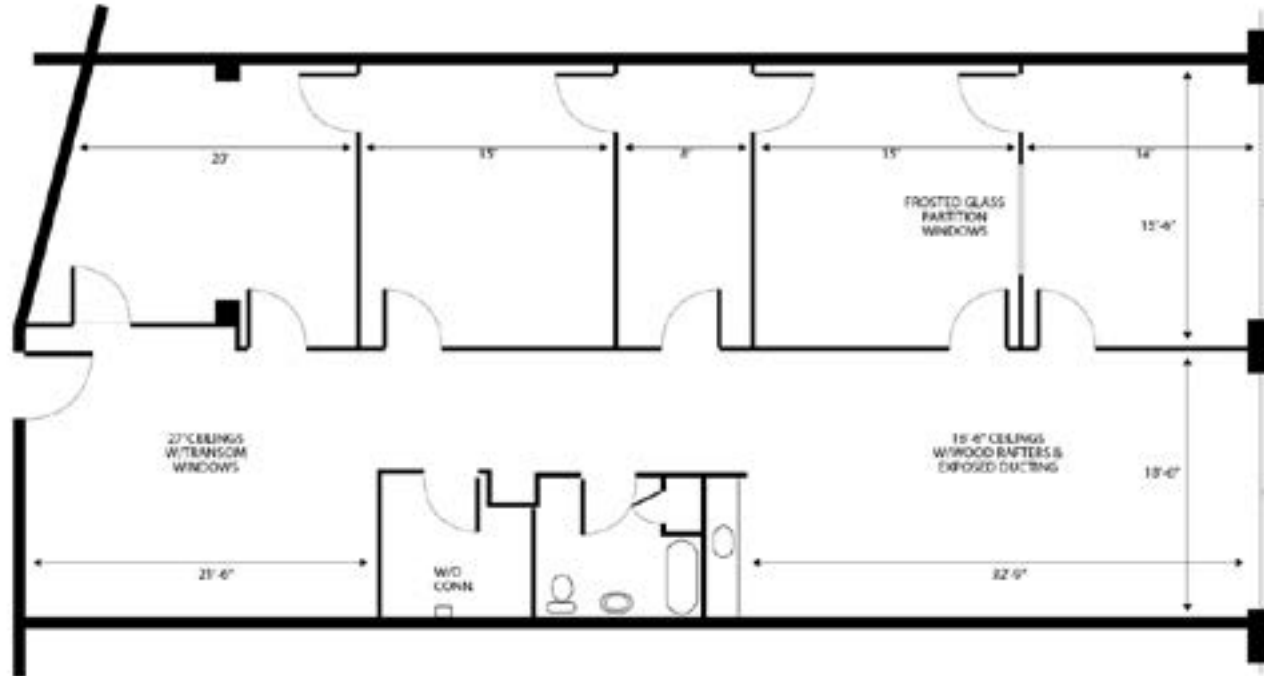
▶ [AtlantaLeasing.com/KingPlow](http://AtlantaLeasing.com/KingPlow)



**ATLANTA LEASING  
& INVESTMENT**

## FLOOR PLAN - Suite T105

TOTAL: 1,347 SF



887 W. MARIETTA STREET, SUITES FOR LEASE ATLANTA GA, 30318

▶ 404.348.4448

▶ [AtlantaLeasing.com/KingPlow](http://AtlantaLeasing.com/KingPlow)

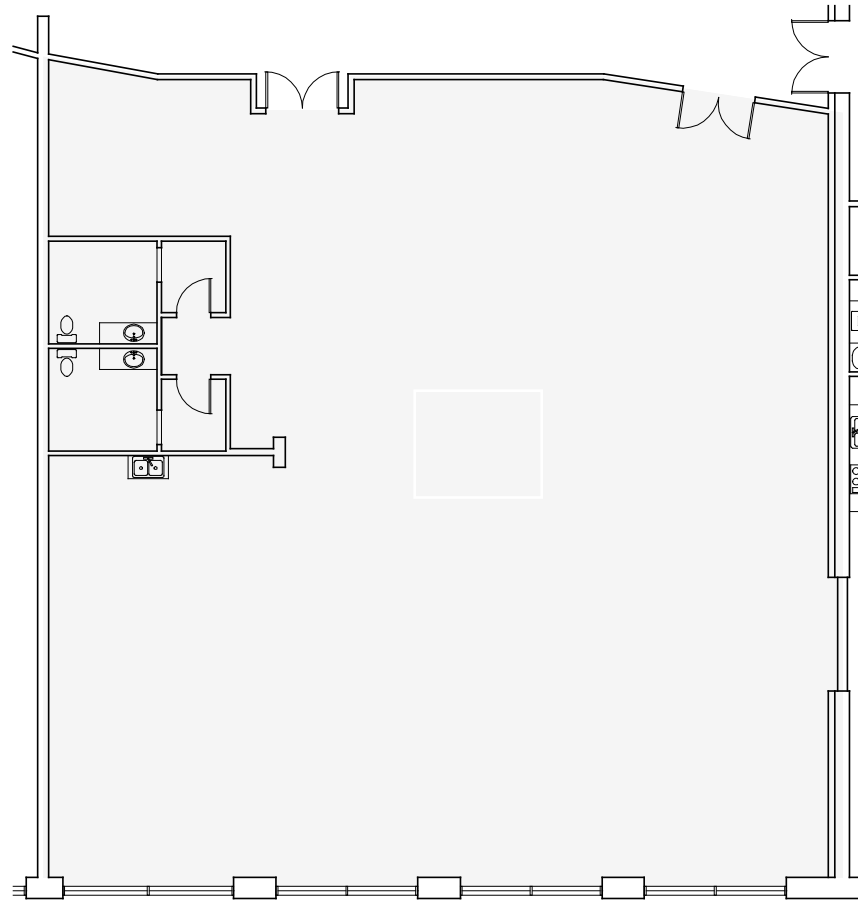


ATLANTA LEASING  
& INVESTMENT



## FLOOR PLAN - Suite S107

**TOTAL: 4,866 SF**



**887 W. MARIETTA STREET, SUITES FOR LEASE    ATLANTA GA, 30318**

▶ 404.348.4448

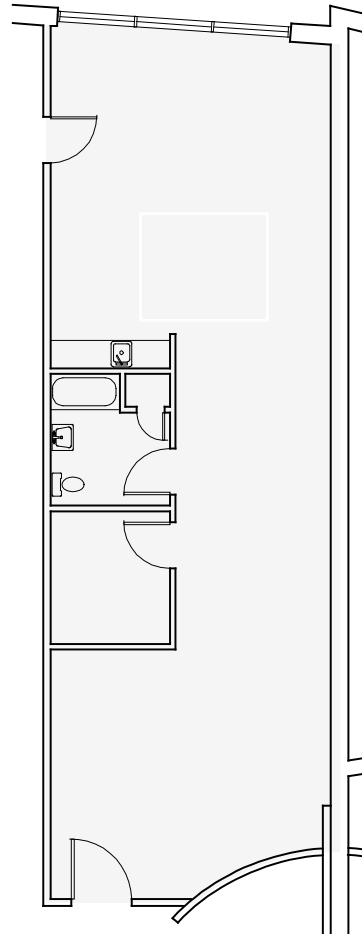
▶ [AtlantaLeasing.com/KingPlow](http://AtlantaLeasing.com/KingPlow)



**ATLANTA LEASING  
& INVESTMENT**

## FLOOR PLAN - Suite T110

**TOTAL: 1,384 SF**



**887 W. MARIETTA STREET, SUITES FOR LEASE**

**ATLANTA GA, 30318**

▶ 404.348.4448

▶ [AtlantaLeasing.com/KingPlow](http://AtlantaLeasing.com/KingPlow)



**ATLANTA LEASING  
& INVESTMENT**